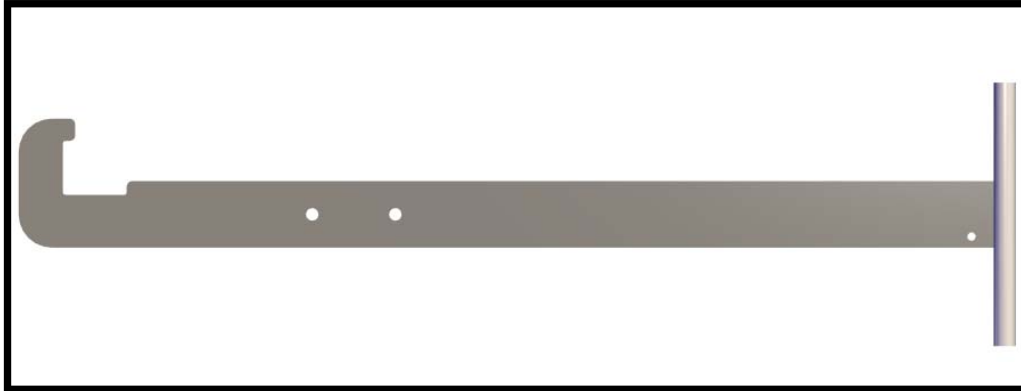


Product Announcement



9000010SS IN-WATER, SS COUPLER INSTALL TOOL (new)

Implementation Date: July 2013



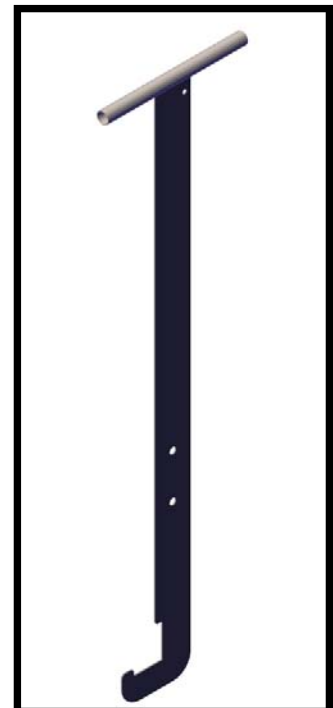
9000010SS

Features and Benefits

Introducing EZ Dock's newly revised in-water installation tool. These new revisions to the current 9000010 include the removal of the bent foot portion for easier use. This change will allow the user to remove the tool at the coupler pocket and not have to travel back along the seam for tool removal. These new tools are currently in stock and can be ordered per part number 9000010SS. The older 9000010 is obsolete and is no longer available.

Shipping weight: 5lbs (2.25kg).

Dimensions: 45" X 12" (114cm x 30.5cm)



9000010SS IN-WATER, SS COUPLER INSTALL TOOL (new)

